

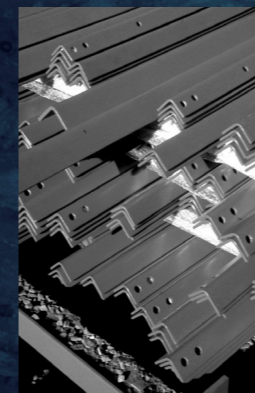
CLIPPER II



SPECIFICATIONS

Clipper II CNC Angle Line Specs	
Angle Sizes	
Max. Angle Size	6 x 6 x 5/8" (150 x 150 x 15mm)
Min. Angle Size	1-1/2 x 1-1/2 x 1/8" (40 x 40 x 4mm)
Flat Bar Sizes	
Max. Flat Bar Size	6 x 5/8" (150 x 15mm)
Min. Flat Bar Size	2 x 1/4" (50 x 6mm)
Punch - Slots, Holes, Shapes etc.	
Punching Tonnage	75 Tons US (68 Metric Tons)
Max. Punch Size	1-1/4" (32mm) Diameter - Standard #270 26mm (1") Diameter - Metric PFP #3
Punch Cycle Time	2 seconds
Min. Gauges (Using 272 punches, 271 dies)	11/16" plus leg thickness for 1-1/2 x 1-1/2" through 2 x 2" 1-3/16" plus leg thickness for 2-1/2 x 2-1/2" 1-1/4" plus leg thickness for 3" through 6" angle sizes
Min. Gauges (Using PFP #3 punches and dies)	15mm (.59") plus leg thickness for 40mm x 40mm (1-1/2" x 1-1/2") through 50mm x 50mm (2" x 2") angle sizes 24mm (.94") plus leg thickness for anything over 50mm x 50mm (2" x 2") through 150mm x 150mm (6" x 6") angle
Shear - Cut to Length	
Shear Tonnage	100 Tons US (91 Metric Tons)
Min. Remnant	9" (230mm)
Shear Cycle Time	5 seconds
Slug Size	1/2" (12.7mm)
Measurement	
In-Feed Speed (X-Axis)	61 ft/min (18.5 meters/min) max
General	
Machine Pass Line	45" (1143mm)
Weight	Main Assembly with Consolet - 8,500 lbs (3,860 kg) Crate with Safety Stands & Transformer - 930 lbs (420 kg) Power Unit - 1,100 lbs (500 kg) Infeed Conveyor Stands - 360 lbs (163 kg) each 10' (3m) section
Power Requirements	480V-60 Hz or 400V-50 Hz
Shop Air	90 PSIG, 10 SCFM for machines with Unist option 90 PSIG, 50 SCFM for machines with Signoscript option None for machines without above options
Foundation	6" (150mm) concrete

We reserve the right to modify features and specifications at any time.



Ocean Machinery, Inc.
6720 NW 15th Way
Fort Lauderdale, FL 33309, USA

Tel 800.286.3624 • 954.956.3131
Fax 954.956.3199
www.oceanmachinery.com

Dealer:

www.oceanmachinery.com

CLIPPER II

CNC ANGLE LINE

for automatic processing of clip angles up to 6 x 6 x 5/8"

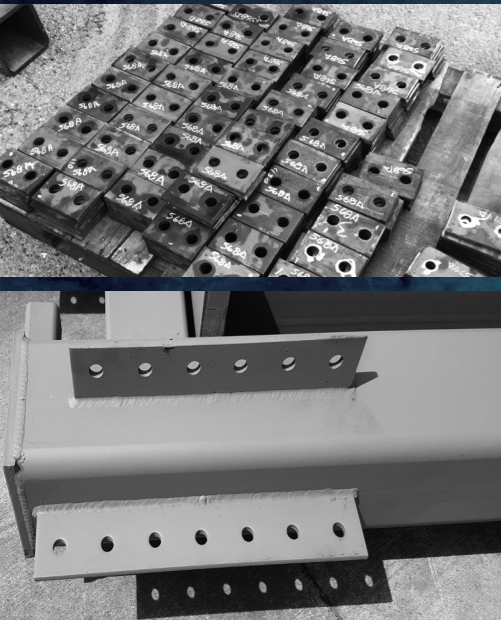
Built exclusively for Ocean Machinery by Peddinghaus

AUTOMATED PROCESSING OF CLIP ANGLES AND FLAT BAR

CLIPPER II

OCEAN DOES IT AGAIN!

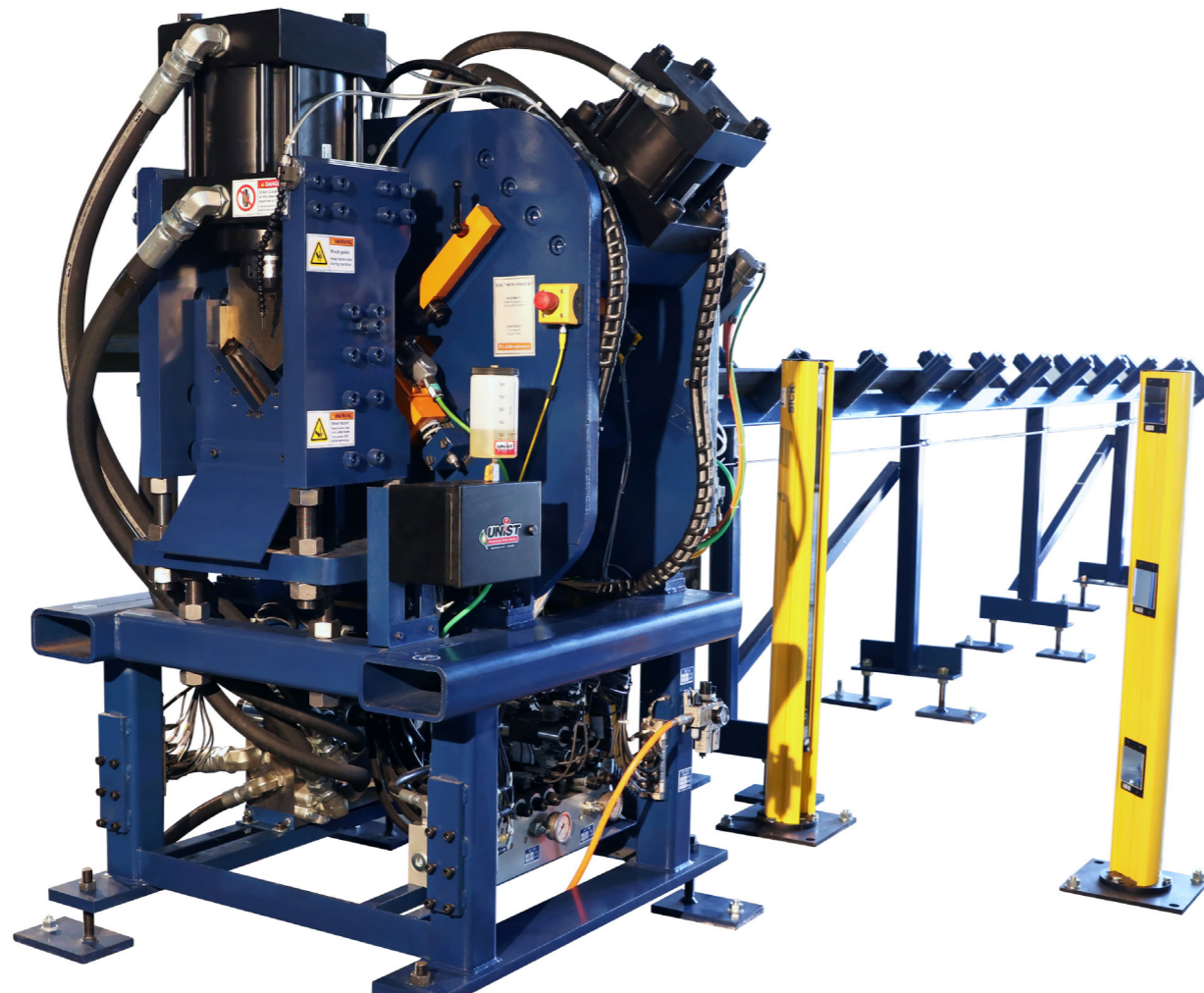
- ✓ Affordable
- ✓ Compact
- ✓ Made in U.S.A.



FULLY AUTOMATED

The Ocean Clipper II is a fully automated CNC Angle Line that eliminates the need to manually layout and punch holes & slots in each leg.

- Compact
- Affordable
- Versatile
- Accurate
- Repeatable
- 6 x 6 x 5/8" max angle size
- Manual programming is easy
- Supports the DSTV file format
- Made exclusively for Ocean, in the U.S.A. by Peddinghaus



AFFORDABLE

The Clipper II is the most economical CNC Angle Line in the world. Similar machines are out of the reach of most small to medium fabricators, but the Ocean Clipper II is extremely affordable. The fabricator only needs to run his machine a few hours per week and it will pay for itself in less than a year.

VERSATILE

The unique patented design of the Ocean CLIPPER II gives it an edge in the market place where processing clip angles and long bracing angles is a necessity. And the ability of the Clipper II to efficiently process short and long flat bar makes this machine so versatile.

The angle processing range is from 1-1/2" x 1-1/2" x 1/8" up to 6 x 6 x 5/8", in any length, and for flat bar the range is from 2 x 1/4" up to 6 x 5/8".

The CLIPPER II uses a unique design featuring two punch units with removeable C-frame tool holders, creating a dramatically more compact machine that is more user-friendly. This small compact size not only reduces the cost significantly, it also reduces the unusable drop to approximately 9" (230mm).

EXCEPTIONAL ACCURACY

A laser guided measurement of the material (X Axis) is accomplished by a fast and highly accurate pinch roller measuring system. Accuracy of 1/32" or better translates into faster erection in the field, eliminating back charges for badly produced parts.

BUILT FOR SERIOUS DUTY

Despite its compact size, the Ocean CLIPPER II Angle Line is designed for heavy duty work in the toughest fabricating shops in the world. It uses many of the same components found on other Peddinghaus angle lines.

The 75 Ton Hydraulic Punch is one of Peddinghaus's standard heavy-duty units and its punching cycle is less than 2 seconds.

It has a maximum hole size of 1-1/4" (Standard No. 270 punches). Standard inexpensive punches and dies are available from Ocean Machinery and other vendors.

The robust 100 Ton Double Cut Shear has a cycle time of only 5 seconds and shears steel up to 5/8" thick.

With the Ocean Clipper, Peddinghaus and Ocean Machinery have succeeded in creating a powerful yet compact clip angle processing machine that eliminates another costly labor area in steel fabricating.

THE SOLUTION TO YOUR PROBLEM

The Clipper II is designed for the structural steel fabricator to eliminate costly layout and manual hole making procedures and to fabricate profiles in less time. By expediting processing times through elimination of human labor, fabricators achieve greater profits while greatly increasing their tonnage-per-month and tonnage-per-employee outputs.

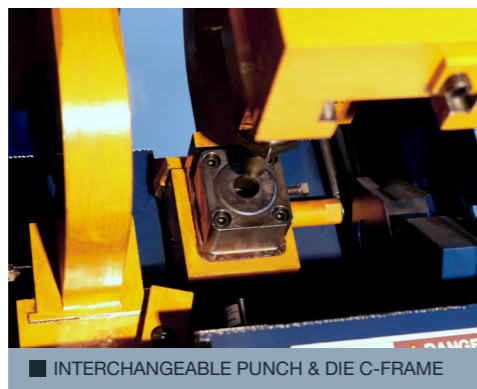
COMPACT SIZE

Thanks to its unique design, the Clipper II is absolutely the most compact CNC Angle Line available, thus freeing up valuable floor space.

The small footprint required and the low cost of the machine have resulted in the Ocean CLIPPER II Series being the fastest selling angle line in the world, and has made it possible for even the smallest fabricators to have their own automated angle production. Some of our CLIPPER II customers have fewer than five shop floor employees.



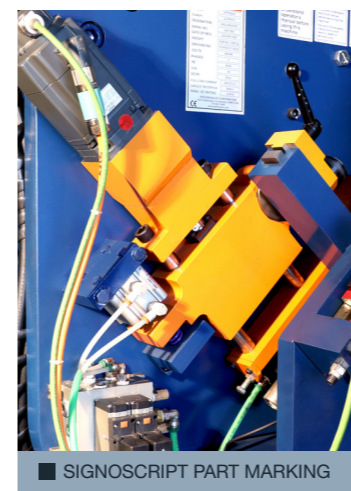
■ PINCH ROLLER INFEED



■ INTERCHANGEABLE PUNCH & DIE C-FRAME



■ UNIST LUBRICATION SYSTEM



■ SIGNOSCRIPT PART MARKING



■ SAFETY LIGHT CURTAINS



■ EASY TO USE TOUCHSCREEN INTERFACE

UNBEATABLE TECH SUPPORT

■ To service our global clientele, Peddinghaus proudly provides our customers 24 hour technical support. Peddinghaus' inside service staff have years of experience in assembly and check-out testing, which provides them with hands-on experience with all machines.

■ Peddinghaus' expansive network of 50+ field service personnel are stationed throughout North and South America, Europe, Africa, Asia, Russia, the Middle East and Australia/New Zealand.

■ The Clipper II features Remote Diagnostic Capability whereby the service department is able to remotely dial in to the machine and run a complete status check, making faultfinding simple and fast.

■ The Clipper II is shipped with a high definition web camera and software; allowing Peddinghaus service employees to directly experience the activity at the customer's installation without the need to leave the office.