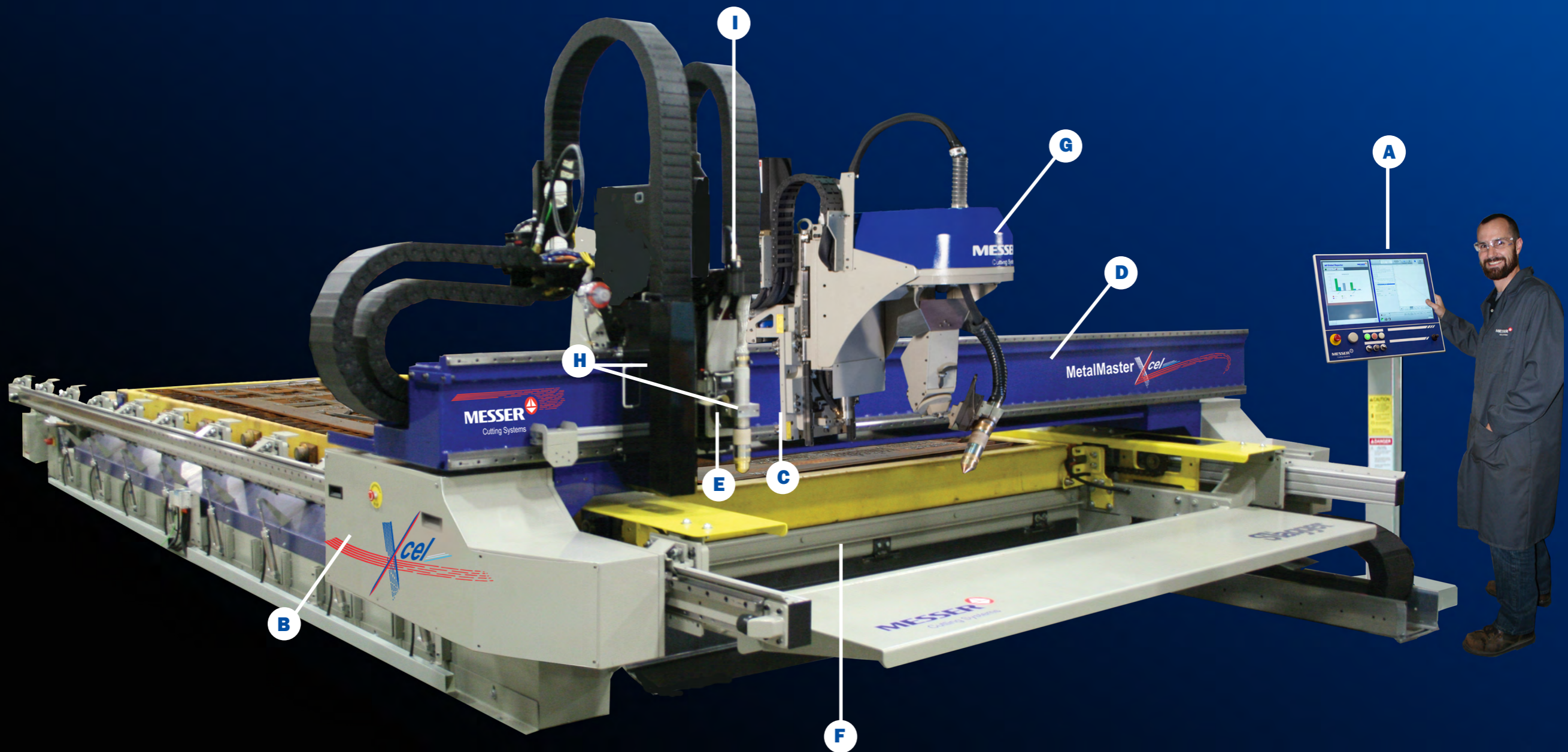


# METALMASTER XCEL

*Xtreme* speeds for increased production and improved cut part quality.

**MESSE**   
Cutting Systems

# THE METALMASTER XCEL INDUSTRY LEADING SPEEDS FOR INCREASED PRODUCTION



# HIGHLIGHTS



## GLOBAL CONTROL<sup>Plus</sup>

Easy-to-use, feature rich, Windows<sup>®</sup> interface. The Global Control<sup>Plus</sup> has a 24" touch screen with multiple process databases featuring custom shape library, true shape nesting and productivity monitoring are just a few of the key features. Remote diagnostics and applications support are available with a push of a button. Easy to use functions allow operators to become experts in minutes.



## DRIVES AXIS

Propelled by X and Y axes, backlash free helical rack and pinion digital 8.4 H.P. and 4.7 H.P. AC servo motors, driven through planetary gear reducers with a maximum acceleration rate of 193in/sec<sup>2</sup> or .5g ensures smooth precise motion; 25 times faster than competitive systems.



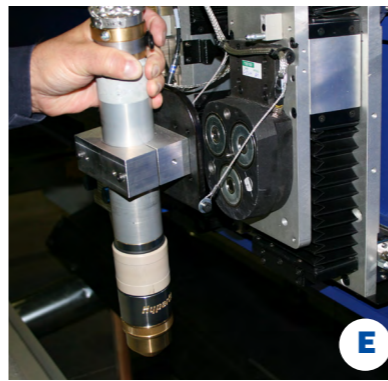
## BEARINGS ASSEMBLY

Linear ways coupled with helical gears provide smooth precise motion.



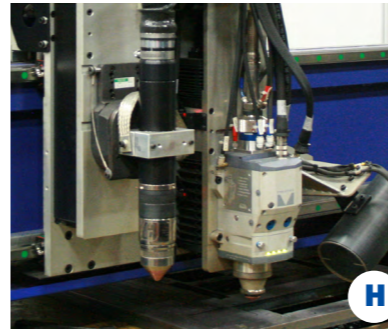
## WELDED STEEL Y-AXIS BEAM

The gantry is a stress relieved fabricated tab and slot high strength steel box beam design which is lightweight, with minimum bending and twisting.



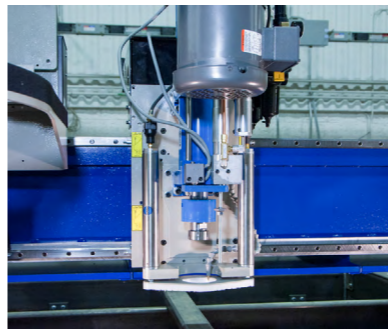
## CSL TORCH LIFTER WITH SURESTOP COLLISION SENSOR

The CSL Torch Lifter with speeds up to 1180 features SureStop Collision Sensor for quick, simple torch realignment for plasma and fiber laser cutting.



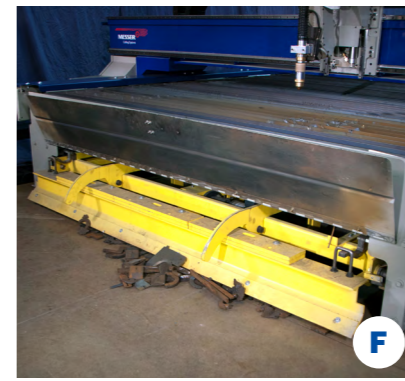
## PLASMA/FIBER LASER COMBINATION CUTTING

2.5 times more productive over traditional plasma or oxyfuel systems. Providing greater flexibility and production ensuring a faster return on investment. Laser cutting up to 10kW (Optional)



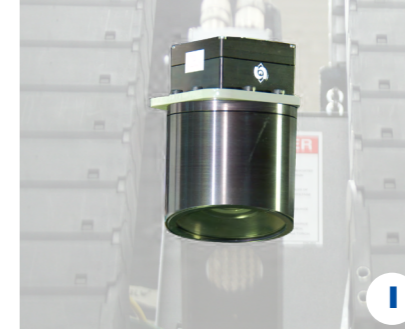
## ELECTRIC DRILL UNIT

Maximum drill diameter is 1/2". Combined with plasma, oxyfuel, and fiber laser cutting allows for more to be done on the piece part in a single handling. (Optional)



## UNITIZED SLAGGER<sup>®</sup> TABLE

The Slagger<sup>®</sup> automates the removal of slag as well as small parts that may have fallen into the table, by using a pusher blade mechanism. There is no need to clean the table or remove slats as the pusher blade does all the work, typically in minutes.



## VIDEO CAMERA

The on-board video camera feature can be used by the operator as both an alignment tool and to monitor the cutting process. The image is conveniently displayed on the 15" TFT color screen of the Global Control<sup>Plus</sup>. (Optional)



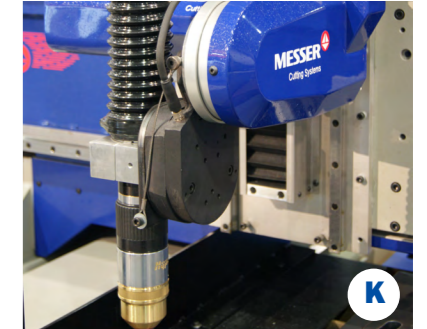
## MARKERS

Various marking techniques can be used as secondary operations. These are: Plasma, Air Scribe, Ink Jet, and Telesis<sup>®</sup> Pinstamp<sup>®</sup>. (Optional)



## GLOBAL ROTATOR DELTA<sup>®</sup>

Rotation of +/- 460° with results in cut part angles of +/- 45°. Complete with bevel programming software and training. (Optional)



## BEVEL-R<sup>®</sup> 5-AXIS, COMPACT PLASMA BEVEL UNIT WITH SURESTOP COLLISION SENSOR

Low profile plasma bevel head with 360 degree programmable rotation with no cable or torch lead wind up rapidly processes your weld prep parts. SureStop Collision Sensor for quick, simple torch realignment for plasma cutting. (Optional)



## PIPE AND TUBE CUTTING SYSTEM

Plasma bevel and vertical cutting of pipe and tube from 2" to 24" diameter. Length up to 40' maximum. Cut up to 1/4"-1 1/4" wall thickness. Offline ProCAM software provided by HGG, specialists in 3D pipe and tube profiling. (Optional)

# METALMASTER XCEL

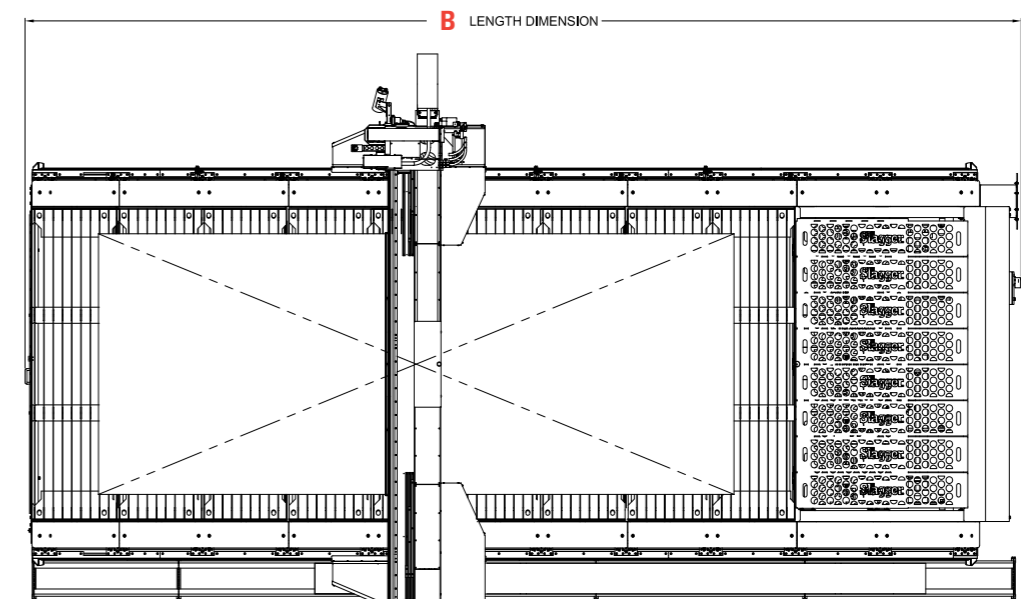
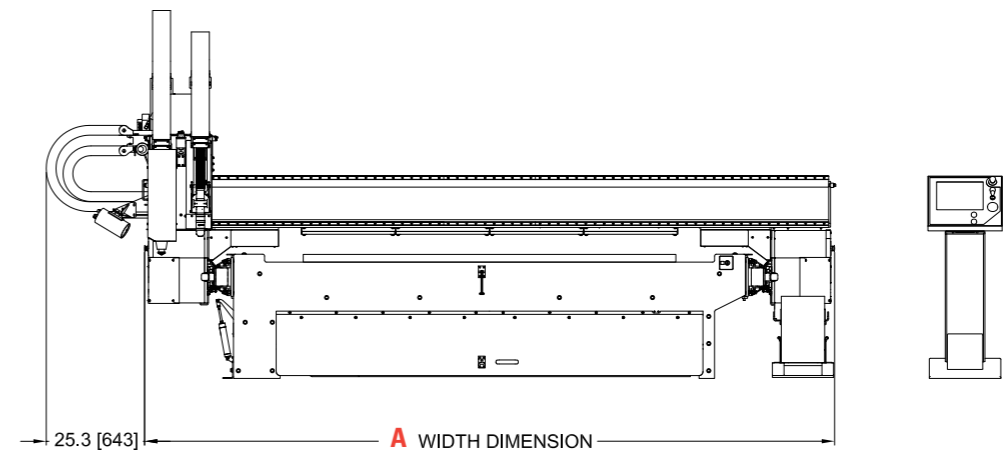
The MetalMaster Xcel features state-of-the-art industry leading traversing speeds of 3000 IPM, robust design, high acceleration drives.

The MetalMaster Xcel can become two machines in one with the fiber laser / plasma combination. With this feature, cutting on the same piece part will increase productivity by allowing critical internal features to be cut with the fiber laser and external features to be cut at higher speeds with plasma, or can run individually for best quality and productivity.

The MetalMaster Xcel not only features state-of-the-art industry leading speed, it also has multiple tool capability allowing for maximum performance and versatility. Precision fiber laser / plasma option in conjunction with linear ways and helical gear rack creates the finest cut part edge quality. Additional options include oxyfuel cutting, drilling up to 1/2", marking, pipe and tube cutting, material handling featuring a table shuttle system and enclosure, and so much more.

## METALMASTER XCEL MODEL MEASUREMENTS

Model	A Machine Width 6'	A Machine Width 8'	A Machine Width 10'	B Machine Clearance Length
<b>MetalMaster Xcel</b> 6' by 10' 15' 20' 25' 30' 40' 50' 55' all	153.8" (12.81')	-	-	-
<b>MetalMaster Xcel</b> 8' by 10' 15' 20' 25' 30' 40' 50' 55' all	-	177.8" (14.81')	-	-
<b>MetalMaster Xcel</b> 10' by 10' 15' 20' 25' 30' 40' 50' 55' all	-	-	201.8" (16.81')	-
<b>MetalMaster Xcel 10'</b>	-	-	-	248.3" (20.69')
<b>MetalMaster Xcel 15'</b>	-	-	-	312.3" (26.02')
<b>MetalMaster Xcel 20'</b>	-	-	-	376.3" (31.35')
<b>MetalMaster Xcel 25'</b>	-	-	-	440.3" (36.69')
<b>MetalMaster Xcel 30'</b>	-	-	-	504.3" (42.02')
<b>MetalMaster Xcel 40'</b>	-	-	-	632.3" (52.69')
<b>MetalMaster Xcel 50'</b>	-	-	-	760.3" (63.35')



# STANDARD FEATURES

- Cutting widths of 6', 8' and 10'.
- Cutting lengths from 10' to 55' in 5' increments.
- Cut material from 26 ga. to 2-3" thick plate based on process.
- Cuts mild steel, stainless steel, aluminum.
- Machine motion accuracy to +/- .002" in an 80" area verified with a laser interferometer.
- Positioning speeds up to 3000 ipm with acceleration up to 193/sec<sup>2</sup> or .5g.
- The Slagger<sup>®</sup> self-cleaning zoned and ducted dry exhaust table.
- Global Control Plus, Windows<sup>®</sup> based with easy to use operator interface.
- Multiple reference point positions for efficient start-of-cut locations.
- Advanced plasma technology provides consistent piercing and faster cutting.
- High-speed CSL Torch Lifter (1180 ipm) with arc voltage height control and infinite adjustable programmable retract (only offered by Messer) features the SureStop Collision Sensor with easy and accurate reset.
- Fast installation and relocation
- Fast installation and relocation due to modular design.
- Virtual Service<sup>™</sup> remote diagnostics and consultation.
- Designed and manufactured in the USA to machine tool and ISO 230-2 standards.
- UL/CUL.

**Messer Cutting Systems, Inc.**  
**W141 N9427 Fountain Boulevard**  
**Menomonee Falls, WI 53051**  
**Tel. +1 262-255-5520**  
**Fax +1 262-255-5170**  
**E-mail: sales.us@messer-cutting.com**  
**www.messer-cutting.com**

*Keep up with the  
latest news and  
"Like Us" on Facebook.*

# OPTIONAL FEATURES

- Two precision plasma torches (maximum) 400 amp capacity each.
- Two fiber lasers up to 10kW.
- Plasma bevel units: Plasma bevel units: Delta<sup>e</sup>, Bevel-R<sup>®</sup>, and Manual Plasma Stripping Bevel Unit for X-Axis.
- Two Turbo Flame<sup>™</sup> or three ALFA oxyfuel torches (maximum).
- Gas cutting with advanced oxyfuel technology using Omniflow automated gas regulation system.
- Various plate markers: Plasma, Air Scribe, Ink-Jet and Telesis<sup>®</sup> Pinstamp<sup>®</sup>.
- Digital and manual video cameras.
- Laser Pointer.
- Global Reporter.
- Slag Scoop or Slag Pit with Bucket.
- Shuttle system with dual pallets.
- Shuttle table enclosure.
- Storage retrieval tower system.
- Plasma station outlet equipment.
- Programming and nesting software.
- Drilling up to ½" diameter.
- Flex Zone for processing material outside of the table.
- Two Zoned Protection System
- Pipe and Tube cutting system.
- Operator glare curtain.
- Material Handling System.
- Messer dust collector systems.
- Exhaust ducting kit.
- Sentry Service Preventative Maintenance Program.
- Visual Service<sup>™</sup>.